

DATA TERMINALS AND CONNECTIONS BY P.O.S. CONTRACTOR

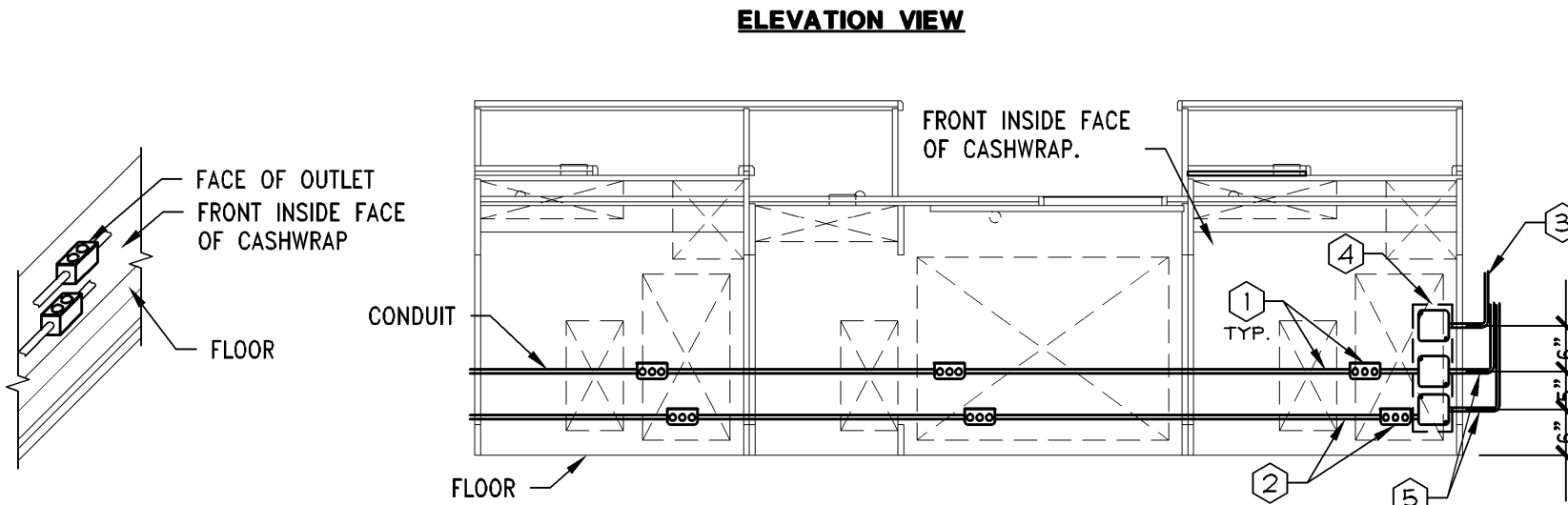
NOTE: REFER TO ARCHITECTURAL SHEETS FOR ADDITIONAL INFORMATION AND LOCATION OF CASHWRAP

NOTE: REFER TO SHEET E02.01 FOR ACTUAL QUANTITY OF REGISTERS AND RECEPTACLES.

ALL RECEPTACLES LOCATED IN AREA ACCESSED BY REMOVABLE DOOR INSIDE OF CASHWRAP

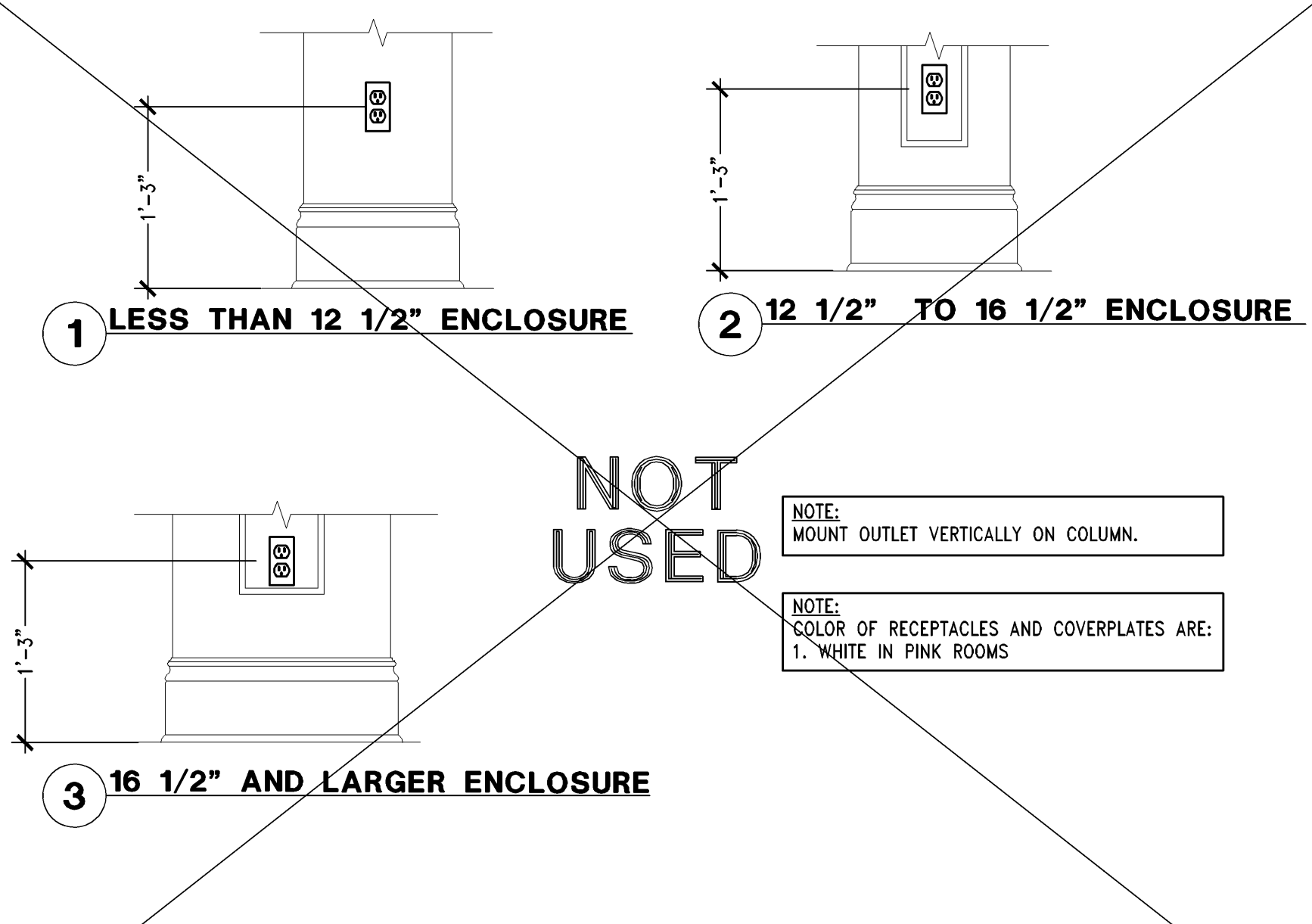
CASHWRAP & TELE/COMP. SYSTEM NOTES

- REGISTERS SHALL SHARE 20 AMP, 120 VOLT DEDICATED CIRCUIT WITH A SEPARATE ISOLATED NEUTRAL & 3RD WIRE GROUND. THE ELECTRICAL CONTRACTOR SHALL FURNISH ORANGE #16S362 RECEPTACLE (HUBBLE). PROVIDE 1/2" CONDUIT BETWEEN EACH RECEPTACLE. THE EMPTY BOX IS PRE-INSTALLED BY VENDOR WITH PLUGS ORIENTED TO TOP.
- 20 AMP, 120V, CIRCUITS FOR UTILITY POWER W/DUPLEX RECEPTACLE. THE ELECTRICAL CONTRACTOR SHALL FURNISH RECEPTACLES. PROVIDE 1/2" CONDUIT BETWEEN EACH RECEPTACLE. THE EMPTY BOX IS PRE-INSTALLED BY VENDOR WITH PLUGS ORIENTED TO TOP.
- PROVIDE 1-1/2" CONDUIT FROM DEMARC PANEL LOCATION DOWN WALL AND CONNECT TO JUNCTION BOX FOR DATA CONNECTION. WIRE FOR DATA LINES TO BE PULLED AND CONNECTED BY P.O.S. CONTRACTOR.
- (3) 4X4 EMPTY J-BOXES ARE PRE-MOUNTED VERTICALLY IN CASHWRAP BY VENDOR. THE TOP BOX IS FOR DATA WHILE THE BOTTOM TWO ARE FOR POWER. SEE ELEVATION VIEW.
- PROVIDE 1/2" CONDUIT FROM PRE-INSTALLED JUNCTION BOXES. STUB OUT FROM ADJACENT WALL FOR POWER CONNECTION. ROUTE CONDUIT UP INSIDE WALL TO CEILING SPACE AND CONNECT TO PANEL LOCATED INSIDE IFS ENCLOSURE. REFER TO POWER PLAN AND PANEL SCHEDULES FOR CIRCUIT DESIGNATIONS.



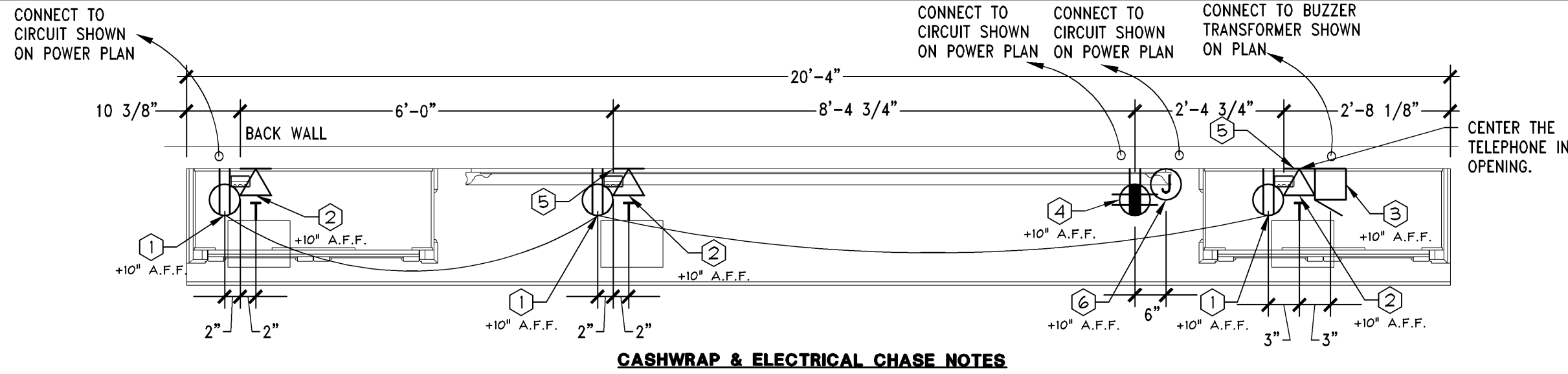
POWER/DATA REQUIREMENTS FOR CASHWRAP

1/2" = 1'-0"
05D-E0405-H00-PKCW 05/09/14



COLUMN RECEPTACLE MOUNTING DETAIL

1" = 1'-0"
05D-E0405-D00-RECP 06/20/13



CASHWRAP & ELECTRICAL CHASE NOTES

- 20 AMP, 120V, CIRCUIT FOR UTILITY POWER W/DUPLEX RECEPTACLE BY ELECTRICAL CONTRACTOR. CONNECT TO CIRCUIT AS SHOWN ON POWER PLAN.
- TELEPHONE OUTLET ON INSIDE OF BACKWRAP UNIT. GENERAL CONTRACTOR TO INSTALL 1/2" CONDUIT WITH PULLWIRE. CONDUIT SHALL RUN FROM DEMARC PANEL LOCATION TO WALL DOWN TO 10" AFF. TELEPHONE WIRE AND #RJ14C JACK BY OTHERS.
- EDWARDS 1064-GS BUZZER. SEE POWER PLAN FOR ADDITIONAL INFORMATION.
- 20 AMP, 120V CIRCUIT FOR DEDICATED POWER W/QUAD RECEPTACLE BY ELECTRICAL CONTRACTOR. CONNECT TO CIRCUIT SHOWN ON PLAN. 14" WIDE ACCESS HOLE PROVIDED FOR RECEPTACLE.
- 10" WIDE ACCESS HOLE, CENTERED ON DIMENSION SHOWN.
- IF ILLUMINATED SIGNAGE IS TO BE INSTALLED IN THIS LOCATION, PROVIDE JUNCTION BOX WITH TOGGLE SWITCH DISCONNECT FOR SIGN POWER. EXTEND (4) WHIPS FROM JUNCTION BOX, UP INSIDE WALL AND STUB OUT OF WALL TO CONNECT TO EACH LETTER OF SIGN. REFER TO ARCHITECTURAL DETAILS FOR EXACT LOCATIONS OF STUB-OUTS.

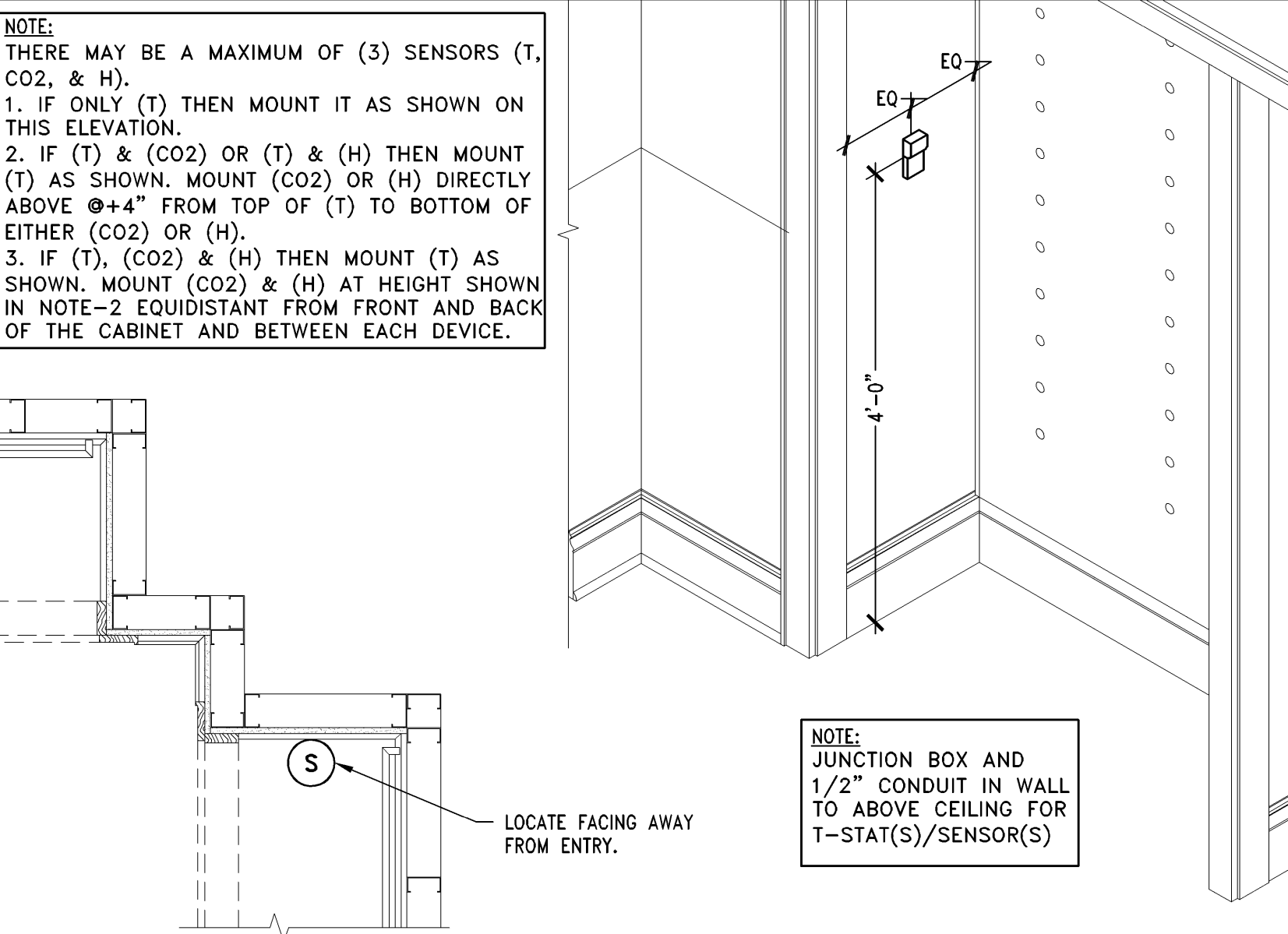
NOTE: LABEL AND TAG ALL PULLWIRE RUNS AT EACH END WITH ORIGIN/DESIGNATION.

NOTE: BACKWRAP SHALL CONTAIN EITHER A VIDEO WALL OR A FRAMED MIRROR WITH ILLUMINATED SIGNAGE. REFER TO SHEET E02.01 - IF ADDITIONAL QUAD RECEPTACLES ARE PRESENT, THEN A VIDEO WALL CONDITION EXISTS. IF AN ADDITIONAL JUNCTION BOX IS PRESENT, THEN A SIGNAGE CONDITION EXISTS. FOR THE ILLUMINATED SIGNAGE CONDITION, REFER TO KEYNOTE (6) ON THIS DETAIL.

NOTE: REFER TO ARCHITECTURAL SHEETS FOR ADDITIONAL INFORMATION AND LOCATION OF BACKWRAP.

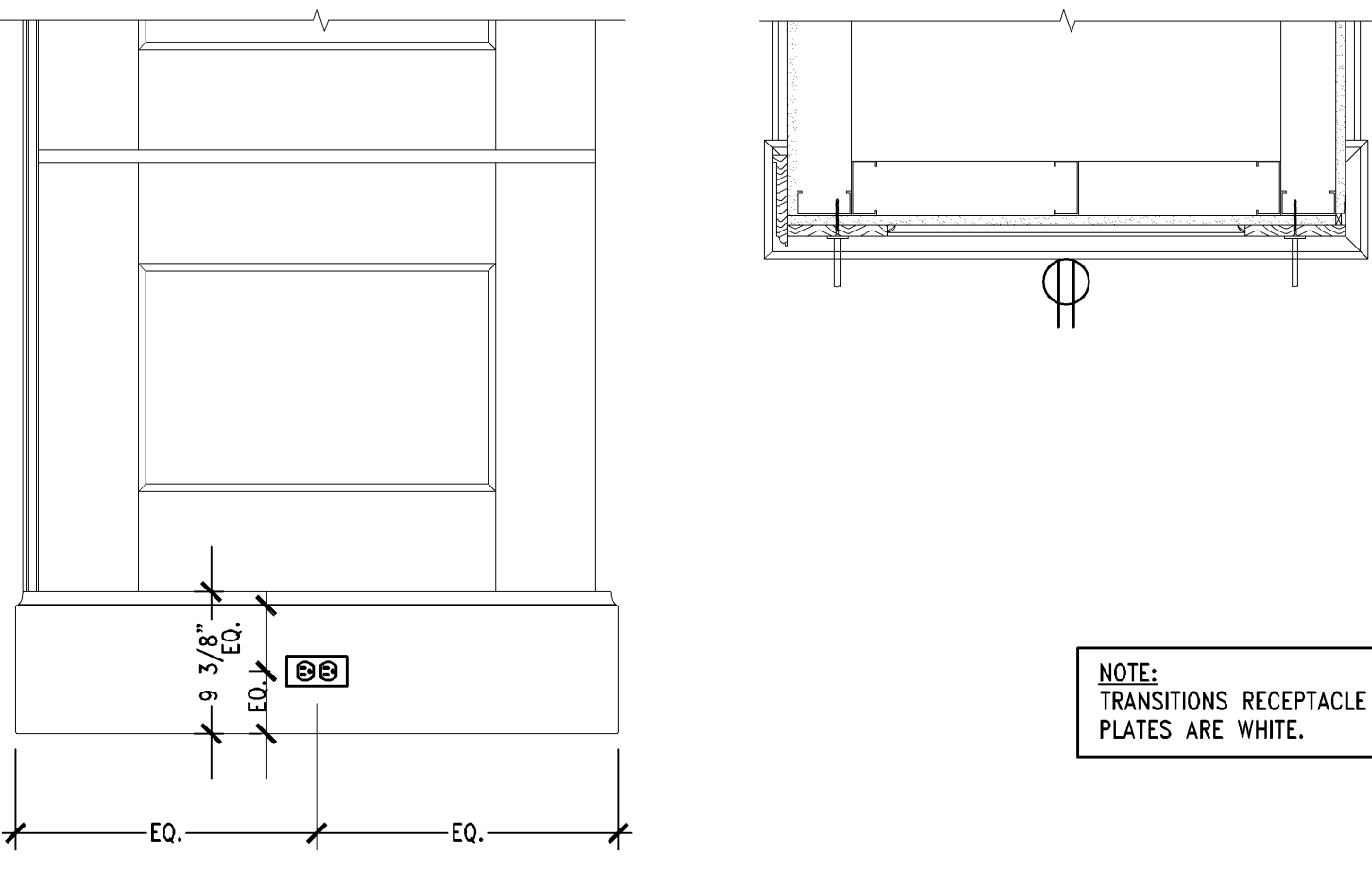
POWER/DATA REQUIREMENTS FOR BACKWRAP - (PBW6R-V05)

1/2" = 1'-0"
05D-E0405-G03-PB6R 05/09/14



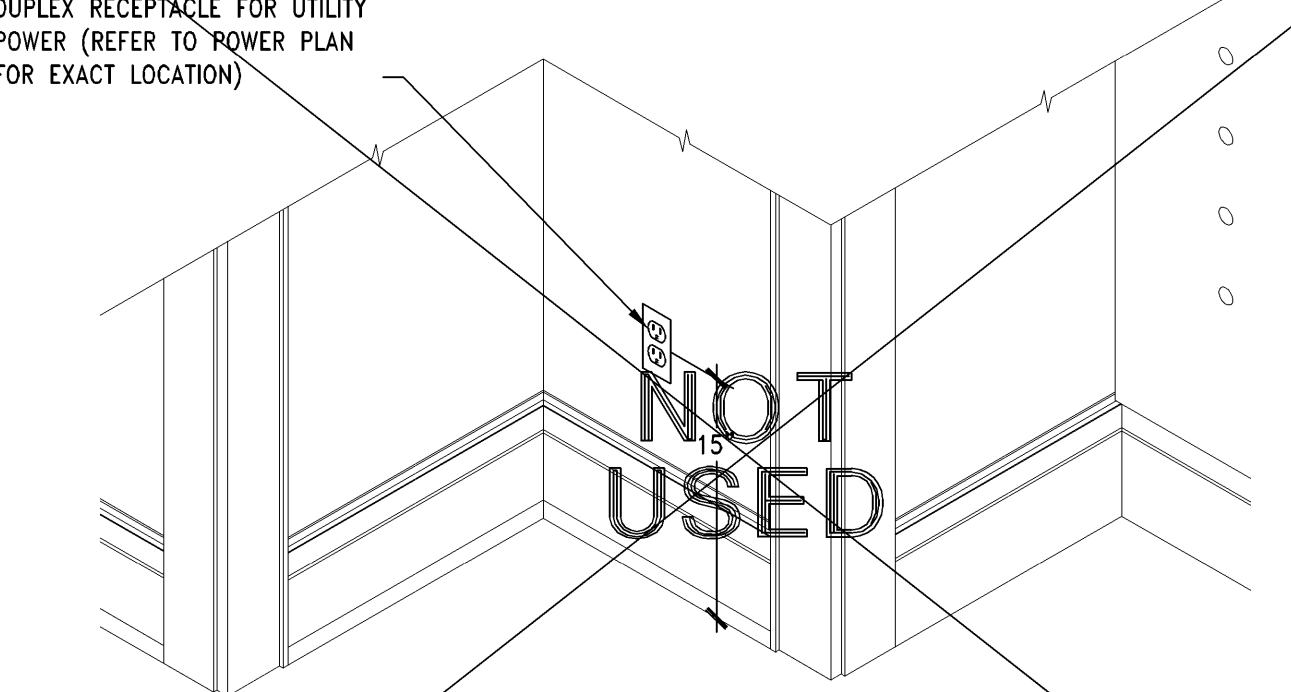
PINK TEMPERATURE SENSOR MOUNTING DETAIL

3/4" = 1'-0"
05D-E0405-C00-TSMD 07/20/12



PINK TRANSITION REC. MOUNTING DETAIL

1" = 1'-0"
05D-E0405-B00-RECP 06/20/13



PINK CORNER REC. MOUNTING DETAIL

1" = 1'-0"
05D-E0405-A00-RECP 07/22/13